

# Lilly Pathfinders

at Ivy Tech

Become a Lilly Pathfinder Today.  
Make Medicines Tomorrow.



**Lilly Pathfinders @ Ivy Tech** is a dual credit/enrollment program for high school students interested in pharmaceutical manufacturing.

**POTENTIAL OUTCOMES:**

- Earning a Pharmaceutical Manufacturing Certificate while in high school
- Pursuing a Biotechnology AAS degree at Ivy Tech after graduation
- Transferring credits to a four-year university upon graduation
- Receiving opportunities for immediate employment after high school or college graduation

Students earn college credit and can potentially qualify for full-time employment after graduation.

Valuable experiences and networking opportunities set students up for success in one of Indiana's top industries.

The pharmaceutical manufacturing industry offers high-paying jobs and contributes significantly to Indiana's economy. Lilly Pathfinders have the potential to make a global impact as the life-saving medicines this industry produces help patients all over the world.

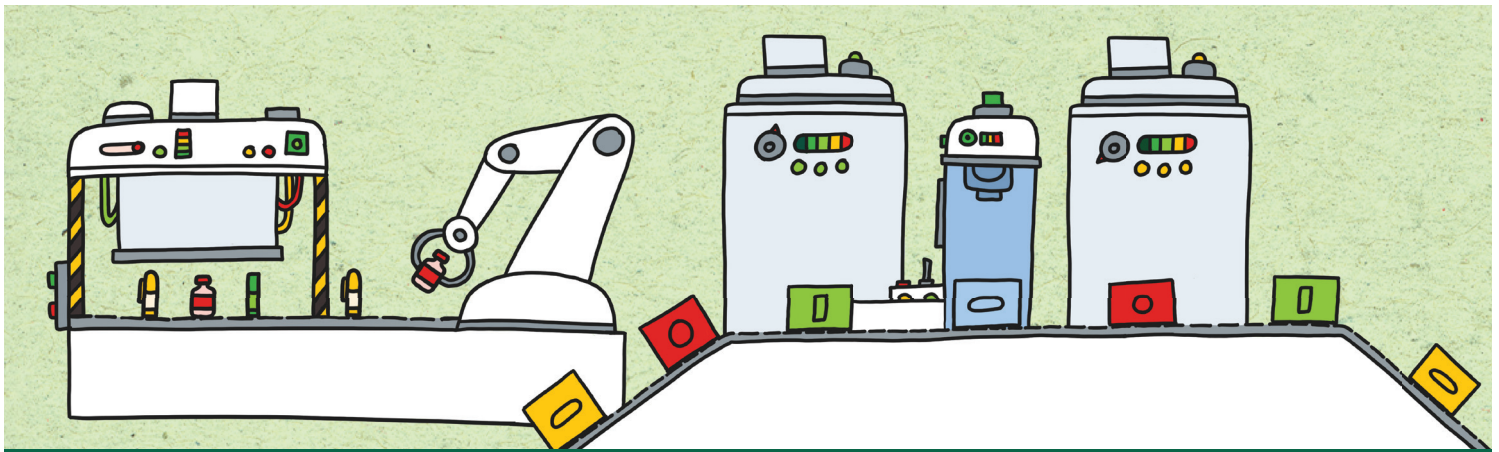


***Did you know...** the Pharmaceutical Industry offers so many types of rewarding careers beyond research and development scientist jobs? Do you like following recipes? Do you like making sure things are in order and keeping track of things? Do you enjoy being part of a team that spots and solves problems?*

***A career as a Pharmaceutical Manufacturing Operator is for you!***

**TO LEARN MORE OR ENROLL:**

Students should connect with their Advisor/Counselor or reach out to Tia Dominic [tdominic1@ivytech.edu](mailto:tdominic1@ivytech.edu)



## Lilly Pathfinder Courses

### **DUAL CREDIT:**

**Survey of Biotechnology** | An in-depth overview of basic molecular techniques, industry regulations and ethics, and additional types of biotechnology.

**Survey of cGMP** | An introduction to the basics of manufacturing, a brief history of the Food and Drug Administration (FDA), and field regulations.

**Survey of Regulatory Affairs** | An introduction to the laws and regulations governing drug development, marketing, and commercial distribution; it also covers biological and medical device products.

**Safety and Regulatory Compliance** | An overview of laboratory safety procedures and compliance standards with regulatory agencies, with an emphasis on understanding the regulatory environments in pharmaceutical, diagnostic, and agricultural research and manufacturing.

### **DUAL ENROLLMENT:**

**Quality Practices** | Covers principles of quality audits and the statistics involved in analyzing and maintaining quality; includes continuous and process improvement practices, as well as an understanding of customers and suppliers.

**Pharmaceutical Product Manufacturing** | Introduces the most fundamental knowledge and skills required for entry-level jobs in pharmaceutical product manufacturing.

