

APPROVAL TO PURCHASE 0.941 ACRES OF IMPROVED LAND AT 22259 COUNTY ROAD 18 IN ELKHART COUNTY, REGION 2 – NORTH CENTRAL

RESOLUTION NUMBER 2009-32

WHEREAS, the long-range planning for the new Elkhart campus includes the need for additional facilities and parking and therefore the acquisition of properties in the vicinity of the campus, and

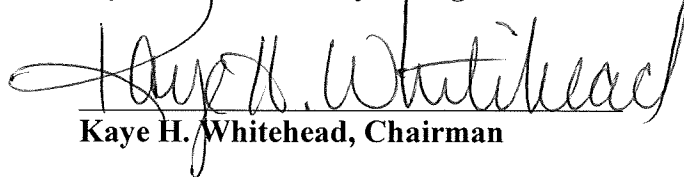
WHEREAS, one of the properties within the land acquisition plan for the new campus at 22259 County Road 18 between the new Elkhart campus and County Road 18 is available for purchase from Arvel and Dianne Osborne for \$140,000, and

WHEREAS, the Region 2/North Central Board of Trustees has requested that the State Trustees purchase said improved land;

NOW THEREFORE BE IT RESOLVED, that the State Trustees do hereby approve the acquisition of 22259 County Road 18 in Elkhart County for \$140,000, and

FURTHER BE IT RESOLVED, that the State Trustees do hereby authorize and direct the President and any other appropriate designated College employee to enter into said purchase of said property, after the documents have been approved by the College General Counsel.

**State Trustees
Ivy Tech Community College of Indiana**


Kaye H. Whitehead, Chairman

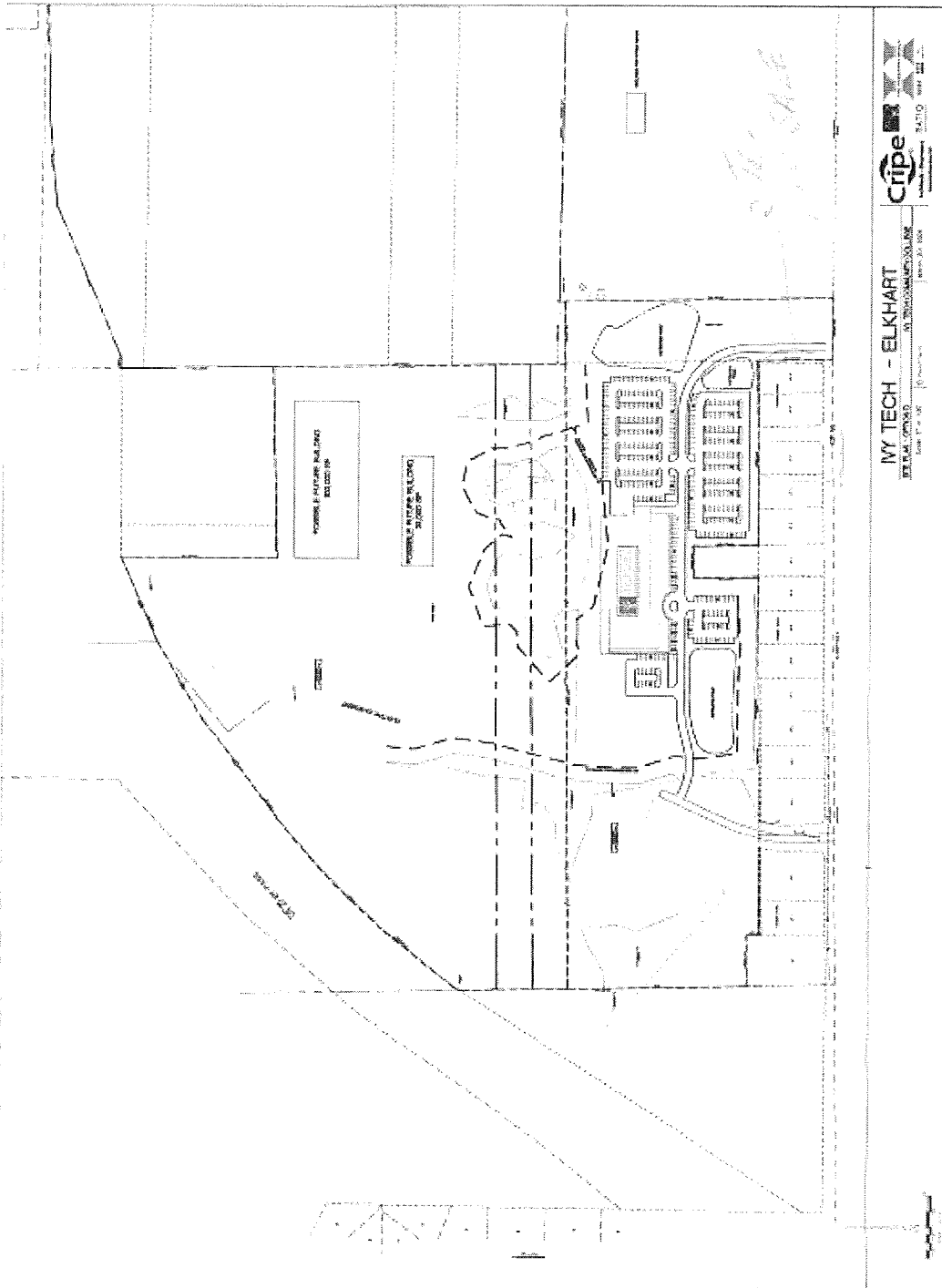

Anne K. Shane, Secretary

Dated July 16, 2009

Ivy Tech Community College
Region 2/North Central authorization to purchase 0.941 acres of improved land at 22259
County Road 18 in Elkhart County, \$140,000
July 16, 2009

- This item will authorize the College to purchase an improved property (includes a house and a pole barn) at 22259 County Road 18, Goshen between the new Elkhart Campus and County Road 18 in Elkhart County.
- As you know, the College is developing a new Campus on donated land in Elkhart County, just south of Elkhart and north of County Road 18 near old County Road 17.
- Eastmore Estates, Concord Township, contains 16 lots that are approximately 200 feet deep each and separates the new Campus from County Road 18.
- Each of the lots would be a desirable acquisition.
- One of the properties, lots 15 and 16, is available for purchase.
- The property consists of a 2,112 square foot, one-story, three-bedroom house and a 1,920 square foot pole barn on approximately 0.941 acres.
- The owner is willing to sell the property to the College for \$140,000.
- The Region 2/North Central Trustees made a request to the State Trustees as outlined above using newly authorized project funds for the purchase.
- After its purchase, the house and pole barn will be demolished so that the new campus can better align its east entrance with Old County Road 17.
- A drawing on the next page shows the relationship among the new campus and lots one through 16.

Action Requested: Approval of the purchase of 0.941 acres of improved land at 22259 County Road 18, Goshen.



IVY TECH - ELKHART
 100 EAST 10TH AVENUE
 ELKHART, IN 46517-1000
 PHONE: 317.434.1000
 FAX: 317.434.1001
 WWW: WWW.IVYTECH.EDU