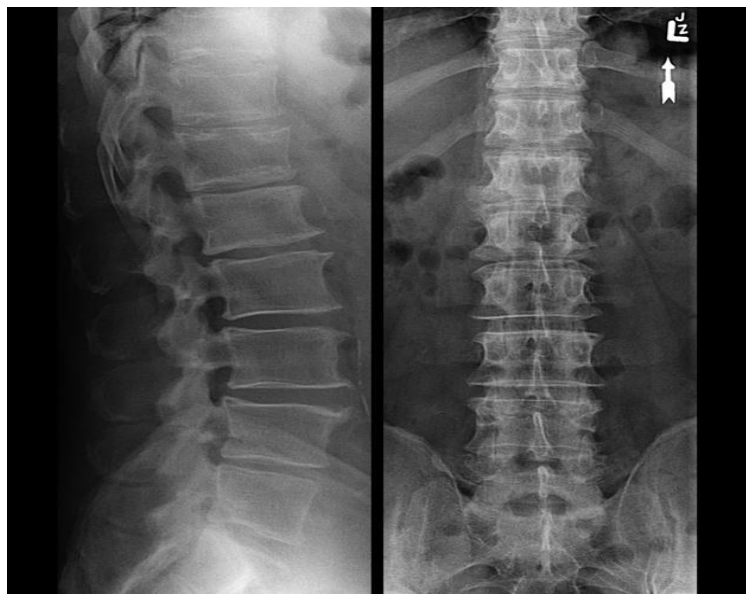




MARION, IN

Medical Imaging Program  
**RADIOLOGIC TECHNOLOGY**



**INFORMATION PACKET**  
2020-2021



Medical Imaging  
Radiologic Technology  
School of Health Sciences

Dear Interested Candidate:

Thank you for your interest in the Medical Imaging Radiologic Technology Program at Ivy Tech Community College in Marion. Enclosed you will find the application steps, information about the program, the current suggested curriculum sequence, the application form, frequently asked questions and other general information about our program.

Ivy Tech Community College's Medical Imaging Program includes an AAS degrees in Radiologic Technology or Sonography. This packet is information about Radiologic Technology only. Presently, the Terre Haute campus is the only campus that offers programs other than radiology.

Radiology is truly an exciting field in healthcare, and it is growing and changing every year. We want to help you with your goals to become a part of this healthcare team. Please read carefully through all the information supplied in this packet. This application packet is the most current and replaces any other previously printed application packet. If you have any questions, please call (765) 651-3100 and ask to speak to the Medical Imaging Program faculty. To make an appointment, please email us or use the Ivy Advising on myivy if you have been assigned to us as an advisee.

Tami Shepard, MSRS, RT(R)(CT)  
Program Chair  
Ivy Tech Community College  
765-651-3100 Ext: 3406  
[tshepard@ivytech.edu](mailto:tshepard@ivytech.edu)

Kelly Jennings, BGS, RT(R)(M)  
Clinical Coordinator  
Ivy Tech Community College  
765-651-3100 Ext: 3413  
[kjennings34@ivytech.edu](mailto:kjennings34@ivytech.edu)

# Radiologic Technology

**DEGREE AVAILABLE:**

Associate of Applied Science

**SALARY RANGE:**

The mean salary for Indiana is \$52,515 according to the 2016 salary survey by the American Society of Radiologic Technologists (ASRT)

**ACCREDITATION:**

Ivy Tech Community College is an accredited, equal opportunity, affirmative action institution of higher education and is accredited by the Higher Learning Commission and a member of the North Central Association.

This Medical Imaging Program is accredited by the Joint Committee on Education in Radiologic Technology JRCERT  
20 N. Wacker Dr., Suite 2850, Chicago, IL. 60606-3182;  
312-704-5300;  
[www.jrcert.org](http://www.jrcert.org))

**OUR ADDRESS:**

261 S. Commerce Rd.  
Marion, IN 46953

800-554-1159  
(765) 651-3100  
[www.ivytech.edu](http://www.ivytech.edu)

The radiologic technologist is someone who specializes in using x-rays to create images of the body, and is known as a radiographer. The radiographs that are produced by the radiographer enable the doctor to diagnose the patient for disease, fractures, or any irregularities. Therefore, a radiographer must be a professional who is skilled in the art and science of radiography and is able to apply scientific knowledge, problem-solving techniques, communication, and the use of high tech equipment, while providing quality patient care. Technologists are employed in hospitals, clinics, physicians and dentists' offices, federal and state agencies, industry, and certain education institutions.

This program includes a curriculum that includes patient care, image production, positioning, radiation exposure, radiation protection, physics, pathology, and ethics (complete list is in this packet). Clinical practice and supplemental instruction are provided at the accredited clinical sites. Upon successful completion of this program, graduates are eligible to take the American Registry Examination given by the American Registry of Radiologic Technologists (ARRT).

This Radiologic Technology Program is a selective program with limited enrollment due to accreditation standards set by the Joint Review Committee on Education in Radiologic Technology (JRCERT). Once accepted, it is a full-time program with the students rotating to the clinical sites and to the didactic instruction at Ivy Tech Community College.

You may not be eligible to be licensed or certified if you have been convicted of a felony. Please check with the Program Chair if you have questions concerning this before enrolling in the program or you may contact the American Registry of Radiologic Technologists (ARRT) [www.arrt.org](http://www.arrt.org)

# Medical Imaging

## Radiologic Technology

### MISSION AND GOALS

#### MEDICAL IMAGING PROGRAM MISSION STATEMENT

The Mission of the Medical Imaging Program at Ivy Tech Community College in Marion, Indiana, is to provide the essential tools to deliver quality patient care and produce diagnostic images at a reasonable radiation dose. Students will be prepared to enter the field as an entry-level Radiographer with commitment to professionalism, communication, and critical thinking.

#### PROGRAM GOALS and STUDENT OUTCOMES

1. Students will be clinically competent.  
Student Learning Outcomes:
  - Students will demonstrate positioning skills.
  - Student will select appropriate technical factors.
2. Students will demonstrate professionalism.  
Student Learning Outcomes:
  - Students will be able to integrate patient care skills in clinical.
  - Students will be able to choose proper radiation safety.
3. Students will display problem-solving and critical thinking skills.  
Student Learning Outcomes:
  - Students are able to determine modifications needed for exams.
  - Students are able to criticize images for diagnostic quality.
4. Students will be able to effectively communicate.  
Student Learning Outcomes:
  - Students will be able to produce effective written communication.
  - Students will be able to produce effective oral communication.

## Program Effectiveness 2015-2019

Outcome	Measurement	Benchmark	Number of Students	Results
1. Students will pass the ARRT on first attempt within 6 months after graduation	ARRT exam results for 1 <sup>st</sup> time examinees	75% or higher for 5 year pass rates	2015: 14 of 15 2016: 12 of 12 2017: 12 of 12 2018: 10 of 12 2019: 14 of 14	2015: 100% 2016: 100% 2017: 100% 2018: 83% 2019: 100%  5 yr. Ave. = 97%
2. Students will be gainfully employed within 1 year after graduation for those <u>actively seeking a job</u>	Graduate survey sent one year after graduation and "word of mouth"	75% of those that responded or verification of employment	Number of students actively seeking employment and responded yes:  2015: 13 of 15 2016: 11 of 11 2017: 10 of 10 2018: 11 of 12 2019: 14 of 14	Percentage from responders that found a job:  2015: 87% 2016: 100% 2017: 100% 2018: 92% 2019: 100%  5 yr. Ave. = 96%
3. Students will complete the program.	Number of graduates from original cohort plus, transfers, and re-admits	75% of all graduation rate	Number of student graduates  2015: 15 of 16 2016: 12 of 15 2017: 12 of 13 2018: 12 of 13 2019: 14 of 14	2015: 94% 2016: 80% 2017: 92% 2018: 92% 2019: 100%  5 yr. Ave.= 92%
4. Graduates overall satisfaction with the program	Graduate survey question # 10	85% answer yes from the students that responded to survey	Number of responders out of the number sent:  2015: 11 of 15 2016: 10 of 12 2017: 7 of 12 2018: 6 of 12 2019: 11 of 14	Percentage from responders:  2015: 100% 2016: 100% 2017: 100% 2018: 100% 2019: 100%  5 yr. Ave = 100%
5. Employers overall satisfaction with our graduates	Employer survey question # 10	85% exceed or meets expectations from the employers who responded to the survey	Number of responders out of the number sent:  2015: 7 of 11 2016: 10 of 12 2017: 5 of 9 2018: 6 of 7 2019: 8 of 10	Percentage from responders:  2015: 100% 2016: 100% 2017: 100% 2018: 100% 2019: 100%  5 yr. Ave. = 100%

Program effectiveness can also be found at the JRCERT website: <https://portal.jrcertaccreditation.org/accredited-educational-programs/details/610958e3-c20f-482b-8708-3786afb3be15>

# Medical Imaging Radiologic Technology

## Physical Demands and Requirements

Frequency: O = Occasionally (1-33%) F = Frequently (34-66%) C = Constantly (67-100%)

Function	Program-Specific Examples	Frequency
<b>GROSS MOTOR SKILLS</b>	<ul style="list-style-type: none"> <li>• Move within confined spaces</li> <li>• Sit and maintain balance</li> <li>• Stand and maintain balance</li> <li>• Reach above shoulders (e.g., put away supplies)</li> <li>• Reach below waist (e.g., plug electrical appliance into wall outlets)</li> </ul>	F
<b>FINE MOTOR SKILLS</b>	<ul style="list-style-type: none"> <li>• Pick up objects with hands</li> <li>• Grasp small objects with hands (e.g., syringe, pencil)</li> <li>• Write with pen or pencil</li> <li>• Key/type (e.g., use a computer)</li> <li>• Pinch/pick or otherwise work with fingers (e.g., manipulate a syringe)</li> <li>• Twist (e.g., turn objects/knobs using hands)</li> <li>• Squeeze with hand (e.g., blood pressure cuff)</li> </ul>	C
<b>PHYSICAL ENDURANCE</b>	<ul style="list-style-type: none"> <li>• Stand (e.g., at client side during minor or therapeutic procedure)</li> <li>• Sustain repetitive movements (e.g., CPR)</li> <li>• Maintain physical tolerance (e.g., work entire shift)</li> </ul>	C
<b>PHYSICAL STRENGTH</b>	<ul style="list-style-type: none"> <li>• Push and pull 50 pounds (e.g., position clients)</li> <li>• Support 50 pounds (e.g., ambulate client)</li> <li>• Lift 50-100 pounds (e.g., pick up a child, transfer patient)</li> <li>• Move light objects weighing up to 10 pounds</li> <li>• Move heavy objects weighing from 25 to 100 pounds</li> <li>• Defend self against combative client</li> <li>• Use upper body strength (e.g., perform CPR, restrain a client)</li> <li>• Squeeze with hands (e.g., operate fire extinguisher)</li> </ul>	F
<b>MOBILITY</b>	<ul style="list-style-type: none"> <li>• Twist</li> <li>• Bend</li> <li>• Stoop/squat</li> <li>• Move quickly (e.g., response to an emergency)</li> <li>• Climb (e.g., ladders/stools/stairs)</li> <li>• Walk</li> </ul>	F
<b>HEARING</b>	<ul style="list-style-type: none"> <li>• Hear normal speaking level sounds (e.g., person-to-person interview)</li> <li>• Hear faint voices</li> <li>• Hear faint body sounds (e.g., blood pressure sounds)</li> <li>• Hear in situations when not able to see lips (e.g., when masks are used)</li> <li>• Hear auditory alarms (e.g., monitors, fire alarms)</li> </ul>	C
<b>VISUAL</b>	<ul style="list-style-type: none"> <li>• See objects up to 20 inches away (e.g., information on a computer screen, skin conditions)</li> <li>• See objects up to 20 feet away (e.g., patient in a room)</li> </ul>	

Function	Program-Specific Examples	Frequency
	<ul style="list-style-type: none"> <li>● See objects more than 20 feet away (e.g., client at end of hall)</li> <li>● Use depth perception</li> <li>● Use peripheral vision</li> <li>● Distinguish color (e.g., color codes on supplies, charts, bed)</li> <li>● Distinguish color intensity (e.g., flushed skin, skin paleness)</li> </ul>	C
<b>TACTILE</b>	<ul style="list-style-type: none"> <li>● Feel vibrations (e.g., palpate pulses)</li> <li>● Detect temperature (e.g., skin, solutions)</li> <li>● Feel differences in surface characteristics (e.g., skin turgor, rashes)</li> <li>● Feel differences in sizes, shapes (e.g., palpate vein, identify body landmarks)</li> <li>● Detect environmental temperature (e.g., check for drafts)</li> </ul>	F
<b>SMELL</b>	<ul style="list-style-type: none"> <li>● Detect odors from client (e.g., foul smelling drainage, alcohol breath, etc.)</li> <li>● Detect smoke</li> <li>● Detect gases or noxious smells</li> </ul>	F
<b>READING</b>	<ul style="list-style-type: none"> <li>● Read and understand written documents (e.g., policies, protocols)</li> </ul>	F
<b>EMOTIONAL STABILITY AND INTERPERSONAL SKILLS</b>	<ul style="list-style-type: none"> <li>● Establish therapeutic boundaries</li> <li>● Provide patient with emotional support</li> <li>● Adapt to changing environment/stress</li> <li>● Deal with the unexpected (e.g., client going bad, crisis)</li> <li>● Focus attention on task</li> <li>● Monitor own emotions</li> <li>● Perform multiple responsibilities concurrently</li> <li>● Handle strong emotions (e.g., grief)</li> <li>● Negotiate interpersonal conflict</li> <li>● Respect differences in clients</li> <li>● Establish rapport with clients</li> <li>● Establish rapport with co-workers</li> </ul>	C
<b>COMMUNICATION SKILLS</b>	<ul style="list-style-type: none"> <li>● Teach (e.g., client/family about health care)</li> <li>● Explain procedures</li> <li>● Give oral reports (e.g., report on client's condition to others)</li> <li>● Interact with others (e.g., health care workers)</li> <li>● Speak on the telephone</li> <li>● Influence people</li> <li>● Direct activities of others</li> <li>● Convey information through writing (e.g., progress notes)</li> </ul>	C

## Medical Imaging Radiologic Technology

### Prerequisites and Program Curriculum Semester Sequence – Effective January 2019

GENERAL EDUCATION PREREQUISITES	CREDITS	MEDICAL IMAGING CURRICULUM (SUMMER) SEMESTER 4	CREDITS
<b>IVYT 112 – Student Success in Health Care</b>	1	RADT 202 – Radiographic Clinical Education III	4
<b>*APHY 101 – Anatomy &amp; Physiology I</b>	3	PSYC 101 – General Psychology or SOC 111 – Principles of Sociology	3
<b>*MATH 136 – College Algebra</b>	3		
<b>*ENGL 111 – English Composition</b>	3		
<b>*HLHS 101 – Medical Terminology</b>	3		
<b>Total</b>	<b>13</b>	<b>Total</b>	<b>7</b>
MEDICAL IMAGING CURRICULUM (FALL) SEMESTER 2		MEDICAL IMAGING CURRICULUM (FALL) SEMESTER 5	
RADT 111 – Orientation and Patient Care	5	RADT 112 – Image Production & Evaluation I	3
RADT 113 – Radiographic Positioning I & Lab	3	RADT 203 – Radiographic Clinical Education IV	4
RADT 114 – Radiographic Clinical Education I	3	RADT 209 – Radiographic Positioning IV & Lab	3
RADT 117 – Radiation Physics & Equipment Operation	3	RADT 218 – Imaging Production & Evaluation II	3
		RADT 221 – Pharmacology & Advanced Procedures	2
<b>Total</b>	<b>14</b>	<b>Total</b>	<b>15</b>
MEDICAL IMAGING CURRICULUM (SPRING) SEMESTER 3		MEDICAL IMAGING CURRICULUM (SPRING) SEMESTER 6	
RADT 115 – Radiographic Positioning II & Lab	3	RADT 204 – Radiographic Clinical Education V	4
RADT 116 – Radiographic Clinical Education II	3	RADT 299 – General Examination Review	3
RADT 201 – Radiographic Positioning III & Lab	3	COMM 101 – Speech or COMM 102 – Interpersonal Communication	<b>3</b>
RADT 206 – Radiobiology and Radiation Protection	3		
APHY 102 – Anatomy and Physiology II	3		
<b>Total</b>	<b>15</b>	<b>Total</b>	<b>10</b>
		<b>Total for the Program</b>	<b>74</b>

\*Denotes courses that are given points for grades for program selection

To see complete course descriptions, go to [www.ivytech.edu/academics/courses-curriculum.html](http://www.ivytech.edu/academics/courses-curriculum.html)



# Medical Imaging Radiologic Technology

## APPLICATION AND SELECTION PROCESS

**If planning to apply to the Medical Imaging Radiologic Technology Program, PLEASE read this information carefully**

The Medical Imaging Radiologic Technology Program has a limited enrollment based on the standards set by the Joint Review Committee on Education in Radiologic Technology (JRCERT). Applications to the program and/or completion of prerequisite courses do not guarantee admission into the technical portion of the program.

### **PRE- MEDICAL IMAGING RADIOLOGY STEPS:**

Since the Medical Imaging Radiology Technology Program is a selective program, it is important to closely follow the application steps and the requirements that follow:

1. The following steps are required for new Ivy Tech Community College students:
  - Complete the application process for Ivy Tech Community College on-line at <https://www.ivytech.edu/apply-now/>
  - Provide any previous college official transcript(s) to the Registrar's office, if applicable. Transfers are determined by the registrar office. This should be done during the first semester.
  - Submit ACT or PSAT scores if applicable.
  - Complete the ACCUPLACER TEST or College Substitution. This is done on a walk-in basis. Students can contact the testing center for testing dates. College transcripts or SAT/PSAT/ACT/PACT scores should be turned into records located inside Student Services.
  - View new student orientation that is located on [ivytech.edu/apply/now](http://ivytech.edu/apply/now).
  - Meet with an Academic Advisor. They will help create an IAP (Individual Academic Plan) and Course registration. This advisor will be the student's main advisor for the first 15 credits of the 100 level courses.
  - The student can also make an appointment with any of the Medical Imaging advisors to talk about the program and answer any questions about the profession.
  - If necessary, complete any of the Academic Skills courses required from the results of the student's Accuplacer test.
  - The student is required to complete IVYT 112 during their first semester at the College.
2. Once the student begins to take the General Education courses (see the list in this packet), the Medical Imaging Program faculty becomes the college advisor.
  - The student should make an appointment during the first semester of prerequisites with a Medical Imaging advisor to be sure that the student is taking the appropriate courses and in the correct sequence.
  - To make an appointment call 765-651-3100 to make an appointment. If the student has already been assigned to Tami Shepard or Kelly Jennings, the student can make an appointment through Ivy Advising on myivy.
3. Make sure the student meets all of the physical requirements as stated in this packet.
4. Complete the prerequisites by the due dates (see below).

## **MEDICAL IMAGING RADIOLOGIC TECHNOLOGY**

### **APPLICATION REQUIREMENTS:**

1. Verify that previous college courses from other colleges/universities have been officially approved as transfers by the registrar's office at Ivy Tech Community College by the end of the Spring semester 2021. (Accepted transfers from other Indiana colleges and universities can be viewed at [www.transferin.net](http://www.transferin.net).) The program faculty does not make decisions on course transfers from other colleges to Ivy Tech Community College. That is the role of the registrar.
2. Successfully complete the following four (4) prerequisite courses by the end of the fall semester. These are the courses that will be awarded points for grades. These will account for approximately 2/3 (66%) of points for admission into the program.
  - APHY 101 – Anatomy and Physiology I
  - ENGL 111 – English Composition
  - HLHS 101 – Medical Terminology
  - MATH 136 – College Algebra

The online application system for program cohorts beginning in Fall 2021, Spring, 2022, and Summer 2022 - as a transition initial roll-out - will “count” the highest of the first three grade attempts from the initial attempt regardless of the date in which the course was taken. As an example, if a student took the same course in 1999, 2003, 2005, and 2010, the system will pick up the highest grade from the 1999, 2003, and 2005 attempts.
3. Take the Pre-admission HESI and Critical Thinking test. This test result is approximately 1/3 (33%) of the points for admission.
  - The testing window for Pre-admission HESI and Critical Thinking test is Friday January 8<sup>th</sup> – Friday April 30<sup>th</sup>, 2021.
  - The Pre-admission HESI and Critical Thinking test can be taken online. Students may sign up on the Indianapolis, Marion, and Terre Haute Ivy Tech Community College's campuses' web sites.
  - The Pre-admission HESI and Critical Thinking test maybe taken up to 2 (two) times in a two-year period regardless of the testing location. Only the first two scores will be considered.
  - There must be 30 days between the test dates.
  - The student must pay the approved testing fee each time.
  - Exam scores will be valid for 2 (two) years from the date of the initial Pre-admission HESI and Critical Thinking test.
  - The score from the Pre-admission HESI and Critical Thinking test will be used to determine points.
  - It is recommended the student take the Pre-admission HESI and Critical Thinking test more than 30 days before the application due date so there is time to repeat it to attempt a higher score.
4. Complete an online application for the Marion Medical Imaging Program.
  - Online application window is open March 15<sup>th</sup> through May 15<sup>th</sup>, 2021.
  - Final application deadline is May 15<sup>th</sup>, 2021.

### **Selection Process**

Selection is based on points. Points are given for Anatomy and Physiology (APHY 101), College Algebra (MATH 136), Medical Terminology (HLHS 101), and English Composition (ENGL 111). The total points for the grades in these courses are worth 2/3 of the total points. The Pre-admission HESI and Critical Thinking test is given points based on the average of all three scores. The HESI and Critical Thinking is worth 1/3 of the total points.

## **Details of Application and Selection Process**

- Students will be able to select up to 3 programs and 3 campuses each.
- Depending on their rank and offers, students could potentially receive multiple offers.
- Once a student accepts 1 offer, then they are immediately withdrawn from all offers.
- A student does have the option to withdraw, his/her application entirely from the system. In this case, the student will not be placed back into the application pool for this application cycle.
- Student applications are assigned points on the following criteria: Grades, Pre-admission testing, and Certifications as applicable to the program.

### Point Values

<b>Point Scale</b>	<b>SCIENCE</b>	<b>NON-SCIENCE</b>
A	30	15
B	20	10
C	10	5
D	0	0
F	0	0

Science Classes – APHY, CHEM, BIOL, MATH, SCIN, HLHS 101, PARM 102, SURG 203

Non-Science Classes – ENGL, PSYC, COMM, IVYT, HLHS 105

CLEP/DANTES/VERIFIED CREDIT = B (Non-Science)

S/T/Pass = Letter grade of C per category

### Pre-Admission Entrance Test

- The window to take entrance exams is January 8<sup>th</sup> – April 30<sup>th</sup>.
- Required Tests
  - HESI – Medical Imaging

Certification Points – No additional points are available for completed certifications.

### Other Notes:

- Multiple Attempt Policy (ASOM 3.2) – Repeating Courses – Students may repeat a course one time. In cases of extenuating circumstances, students may attempt a course for a third time only with the approval of the Campus Academic Officer (CAO) or designee. A withdrawal counts as an attempt.
- The online application system for program cohorts beginning in Fall 2021, Spring, 2022, and Summer 2022 - as a transition initial roll-out - will “count” the highest of the first three grade attempts from the initial attempt regardless of the date in which the course was taken. As an example, if a student took the same course in 1999, 2003, 2005, and 2010, the system will pick up the highest grade from the 1999, 2003, and 2005 attempts.
- Extra points for General Education courses will not be permitted
- For fall admission, courses must be completed by the end of the previous spring semester to count in the point system\* Grades must be in the system by Midnight of Tuesday following the end of semester.
- Per ASOM 1.6 - General education courses and prerequisites into a program cannot expire.
-

### Offers of Admission

- Offers of admission to the program will be emailed beginning within 1 week of the application close date and continue until program capacity is met or one week before the start of fall classes. There will be 8 Rounds of Auto-Select and 6 Rounds of Manual Selection. Each round will begin at 6am and you will have until 11:59pm the following day to either accept or reject an offer. If a student fails to respond, then the offer will expire. If a student rejects an offer three (3) times, then he/she will be removed entirely from the application pool.
- Auto-Select: May 21<sup>st</sup> – June 5<sup>th</sup>
  - Round 1 – May 21<sup>st</sup> - Offers Released May 22<sup>nd</sup> – Offer Expires at 11:59pm
  - Round 2 – May 23<sup>rd</sup> – Offers Released May 24<sup>th</sup> – Offer Expires at 11:59pm
  - Round 3 – May 25<sup>th</sup> – Offers Released May 26<sup>th</sup> – Offer Expires at 11:59pm
  - Round 4 – May 27<sup>th</sup> – Offers Released May 28<sup>th</sup> – Offer Expires at 11:59pm
  - Round 5 – May 29<sup>th</sup> – Offers Released May 30<sup>th</sup> – Offer Expires at 11:59pm
  - Round 6 – May 31<sup>st</sup> – Offers Released June 1<sup>st</sup> – Offer Expires at 11:59pm
  - Round 7 – June 2<sup>nd</sup> – Offers Released June 3<sup>rd</sup> – Offer Expires at 11:59pm
  - Round 8 – June 5<sup>th</sup> – Offers Released June 6<sup>th</sup> – Offer Expires at 11:59pm
- Manual-Select: June 7<sup>th</sup> – June 26<sup>th</sup> (may extend to start of Fall semester)
  - Round 1 – June 7<sup>th</sup> – Offers Released June 8<sup>th</sup> – Offer Expires at 11:59pm
  - Round 2 – June 10<sup>th</sup> – Offers Released – June 11<sup>th</sup> – Offer Expires at 11:59pm
  - Round 3 – June 14<sup>th</sup> – Offers Released – June 15<sup>th</sup> – Offer Expires at 11:59pm
  - Round 4 – June 17<sup>th</sup> – Offers Released – June 18<sup>th</sup> – Offer Expires at 11:59pm
  - Round 5 – June 21<sup>st</sup> – Offers Released – June 22<sup>nd</sup> – Offer Expires at 11:59pm
  - Round 6 – June 24<sup>th</sup> – Offers Released – June 25<sup>th</sup> – Offer Expires at 11:59pm

### **Program Requirements before Starting the First Fall Term**

Once admitted into the program, the student will be notified by US mail and/or E-Mail. Accepted Medical Imaging students will be required to do the following:

- Attend an orientation meeting, usually held in July.
- Complete a Criminal Background Check and Drug Test through Castle Branch. Detailed information will be sent to the students that have been selected into the program.
- Submit proof of inoculations, including a recent TB test, and physical from their physician.
- CPR certification will be provided first semester, but the student is responsible for cost.

### **Criminal Background Check and Drug Testing**

Ivy Tech policy states that students in Health Sciences and Nursing Programs that participate enrolled in clinical courses must perform a criminal background check and drug testing before starting the first semester of clinicals as part of the admission process. This procedure is repeated at the start of their second year. Ivy Tech uses Castle Branch. Information on how to purchase search and drug test is sent to students with their acceptance letter.

The results must be satisfactory to the clinical sites to complete this portion of the coursework. Although personal information will be kept confidential, names and results of the background checks, whether, negative or positive, may be shared with any affiliating clinical site for the Medical Imaging program in order to determine clinical eligibility. Some clinical sites may be required you to show your criminal background check results to them.

Policy States: Clinical sites have the right to refuse any student for clinical placement. Policy at clinical sites may vary in whether or not students with particular positive findings on the background check will be allowed to attend clinical. In the event there are positive findings on any portion of the criminal background check, a primary clinical site will be notified and requested to make a decision

on whether or not the student will be allowed to complete a rotation at the site, in light of the specific positive findings on the criminal background check. If the clinical site will not allow the student to participate in clinical at that site, the program chair will contact up to two additional clinical sites offering the same type of clinical experience, if available, to attempt to place the student. If these attempts do not result in a clinical site placement for the student, the student will be notified that s/he may not enroll in clinical courses and any co-requisite courses. In most cases, this will mean that the student will not be able to progress in the program, and will therefore not be able to complete the courses required for graduation.

For complete policy, go to <https://www.ivytech.edu/policies/> Policy 4.14

### **Program Start and Graduation Dates**

New students begin each Fall semester and continue through the program for 21 months (5 semesters). This includes the summer semester. Graduation is usually the second week of May. Students starting in 2021 would begin August 18, 2021 and graduate around May 12, 2023 (graduation date has not yet been set for 2023).

### **Program Costs**

**Tuition:** is presently \$149.55 per credit hour. The Imaging Science Program is 74 credit hours = \$11,066.70

**Books:** costs vary by course. The average cost for the radiography books is about \$1500.00 for the 5 semesters.

**Technology fee:** \$75.00 per semester.

**On-line or Hybrid courses fee:** \$20.00 per credit hour for each online / hybrid course.

**Consumable fees:** \$565.00. This includes supplies for certain course like radiation monitoring badges, online clinical tracker, and lab supplies.

**Uniforms:** Students are required to purchase a minimum two sets of green scrubs, lab coat, and shoes. Cost will vary.

**Criminal Background Check and Drug Screening:** Initial check =\$99.90. Re-check = \$72.20.

**Travel:** Students are required to attend clinicals 2-3 times a week and maybe required to travel more than 50 miles. This means there will be travel expenses for gas and wear-and-tear on cars. All items and cost are estimates and are subject to change.

### **Grading Policy**

Our grading scale is:

A 94 - 100

B 88 - 93

C 84 - 87

D 80 – 83

F 79 and below

### **Policies**

Students that are accepted in the Medical Imaging Radiologic Technology Program are given a Student Handbook and Polices with all of our policies and other college information including refund policies, academic policies, clinical obligations, grading system, graduation requirements, and the criteria for transfer of credit. Policies are available to all interested parties by contacting the Program Chair. You can also view the most recent student policies and handbook at <https://www.ivytech.edu/medical-imaging/index.html>

College policies are available on myivy Student tab, under Student Resources or go to <https://www.ivytech.edu/studentpolicies/index.html>

Other general information about the College can be found at [www.ivytech.edu](http://www.ivytech.edu)

### **Program Calendar and Holidays**

The Medical Imaging program follows the same academic calendar as the Marion Campus. To view the most current academic calendar please go to <https://www.ivytech.edu/marion/index.html>

The Medical Imaging program will follow the same semester breaks as the College. Students will also observe holidays recognized by the clinical affiliate that they are assigned to at the time of the observance.

### **Classroom and Clinical Hours**

The Medical Imaging courses are offered during the daytime only. The program offers many courses as “hybrid”. For example, this means that for a 3 credit hour course, the student will be in class 1.5 hours and the rest is administered on-line through IvyLearn. All Imaging Science students **must have access to the internet** to complete the course work. A typical week might be classes on Tuesdays from about 8:30 - 3:00 and a lab at the campus on Wednesdays, and clinical time on Thursdays and Fridays from 7:30-4:30 (times vary from site to site). This will also vary from semester to semester.

Medical Imaging students are required to rotate through various clinical sites. Because different facilities may offer different opportunities, students should be prepared to attend and travel to any of the clinical sites. Although the hours may vary from site to site, and from semester to semester, students attend clinical a minimum of two days a week. According to policy, students will NOT be scheduled for more than a total of forty (40) hours per week, or ten work hours in one day. The JRCERT recognizes traditional assignment as any scheduled clinical hours between 5:00 AM and 7:00 PM weekdays.

### **Clinical Rotations**

Students will be required to rotate to different hospitals and clinics for the clinical portion of their education. Students will be assigned locations before each semester begins. Proximity to a clinical site does not guarantee rotation to that site. The currently approved clinical sites include the following:

- Marion General Hospital – Marion, IN
- South Marion Medical Park – Marion, IN
- Veteran’s Hospital – Marion, IN
- Parkview Wabash County Hospital – Wabash, IN
- IU Ball Memorial Hospital – Muncie, IN
- Imaging Center of Muncie – Muncie, IN
- IU Blackford County Hospital – Hartford City, IN
- Community Hospital Anderson – Anderson, IN
- IU Health Jay Hospital – Portland, IN

Students may be assigned to any of our clinical sites, so students need to be aware that driving a great distance to clinicals might be necessary.

### **Transfer of Credits**

Ivy Tech courses automatically transfer from one campus/region to another.

Ivy Tech accepts courses from other colleges and universities with grades of C- or better from regionally accredited colleges regardless of the age of the course. There are some exceptions if the

case of very specialized computer and technology classes, which are reviewed on a case-by-case basis. Transfer credits will be evaluated and transfer of credits will occur through college policy.

Any student who wishes to submit a transcript for consideration of previously earned credits must have the transferring institution send an official transcript to the Registrar. The Registrar will forward information on non-CTL courses to the appropriate department or school for review, the department or school will make recommendations regarding credit transfer to the Regional Academic Officer or designee, and the Registrar will record transferred credit as earned hours on the student's official permanent record in a reasonable, timely manner.

Acceptance of transfer credits that are not equivalent to courses on the College's course inventory are applied to program electives subject to approval by the Regional Academic Officer or designee.

The student may be asked to supply pertinent course descriptions or copies of the college catalog(s) if further documentation is needed to facilitate credit review.

Transferred credit is included in earned hours, but does not affect the grade point average. Students wishing to transfer in technical courses that fulfill program requirements (non-elective courses) may be asked to demonstrate competency if the transfer coursework is outdated.

Final authority for transfer credit rests with the Regional Academic Officer or designee.

### **Transferring to a 4 Year Degree**

Ivy Tech Community College has articulation agreements with Indiana University-Kokomo and the University of Southern Indiana's Bachelors' degree programs in medical imaging. See website for details.

### **Transferring from other Medical Imaging Programs**

Students that would like to transfer from one radiology (imaging) program to Ivy Tech Community College's Marion Medical Imaging program shall be subject to the availability of an appropriate clinical placement and student admission policies.

Transfer students must meet all requirements for college admission.

Students must have successfully completed all of the pre-requisite courses required for the Marion Ivy Tech Medical Imaging Program.

Course syllabi, health records, competencies, and transcripts must be reviewed and approved by the Program Chair before a student can be allowed to transfer.

Students may be asked to show competency in positioning courses or asked to repeat a positioning course that the student has already completed if the student has been out of a program for more than one semester before being allowed to transfer.

All previous competencies completed from the transfer program will be repeated at Marion, Ivy Tech Medical Imaging program.

## **FAQ**

### ***1. How many students do you accept every year?***

Presently it is 14.

### ***2. How many applications do you receive?***

It varies from year to year but average is around 50.

**3. Is there a waiting list?**

No, we do not use a waiting list. If an applicant is not selected, then he or she must reapply the following year.

**4. What is your deadline for the application?**

The deadline May 15th. Only online applications will be considered for acceptance.

**5. When are students selected?**

The selection process will be finalized after the May 15<sup>th</sup> deadline.

**6. How will I know if I am accepted?**

Students will receive a email offer of admission. Email communication will be through the student's Ivy Tech email account.

**7. What are the prerequisites?**

See the curriculum sheet in this packet.

**8. Do I have to take the prerequisites in Marion?**

No, the prerequisites may be taken at any Ivy Tech campus.

**9. Where do I take the Pre-admission HESI and Critical Thinking test?**

See information about Pre-admission HESI and Critical Thinking test in the selection process of this packet. Pre-admission HESI and Critical Thinking test can be taken online but must be scheduled using instructions located at program website.

**10. How are students selected?**

The selection process is decided by a point system. Points are awarded for the following:  
GPA of the following:

- These courses must be completed by the end of the spring semester of the application year.
  - APHY 101 – Anatomy and Physiology I,
  - ENGL 111 – English Composition
  - HLHS 101 – Medical Terminology,
  - MATH 136 –College Algebra
- Scores on the Pre-admission HESI and Critical Thinking test.

**14. Where are your clinical sites?**

Students will be required to rotate to different hospitals and clinics for the clinical portion of their education. Students will be assigned locations before each semester begins. Proximity to a clinical site does not guarantee rotation to that site. See list of sites in this packet.

**15. Can I take the prerequisite courses in the summer if I didn't get them done in the Spring semester?**

No, the required general education courses must be completed by the end of the spring semester of the year you apply for selection.

**16. What do I need to do if I am accepted?**

If you are accepted into the Medical Imaging program, you will need to do the following:

- Attend the new student orientation.



- Submit the Immunization, Tuberculosis Screening, Physical Examination and Essential Functions Requirements form signed by a physician or advanced registered nurse practitioners, and/or licensed physician assistants.
  - Hepatitis B surface antibody shot is recommended but is optional. Details will be sent prior to starting the program.
  - Drug screen & Criminal background check
- You will be sent a letter with full instructions at that time.

**17. What happens if I don't get accepted?**

If a student is not accepted into the Medical Imaging program, the student may...

- Reapply the following year and submit new transcripts and scores if repeated.
- Consult with advisor for other programs that you may complete or be eligible to pursue.
- Discuss with Medical Imaging Program faculty about the areas that need to be improved.
- Discuss with the Medical Imaging Program faculty an alternate plan.

**18. Will I learn Ultrasound, CT, or MRI in the Medical Imaging Program?**

Not Ultrasound or MRI but some basics of CT. The Medical Imaging program is to prepare students for radiology and x-rays. During the program, students will be introduced to other imaging modalities but will not learn how to do medical procedures. Presently, the Terre Haute campus does offer an AAS degree in Sonography.

**19. What is the cost of the program?**

The program is 74 credits so multiply that with the present tuition for ITCC (you can go to [www.ivytech.edu](http://www.ivytech.edu) for current tuition). Other cost includes:

- 2 scrub outfits and shoes. These prices will vary depending on where you purchase these articles.
- There is also a cost for books and lab fees. This too will vary according to market value.
- Dosimetry badges and service.
- Health consumables and clinical tracker.
- Students will also travel to a variety of clinical sites so gasoline is another cost.
- Technology fees
- See cost in this packet

**20. Can I work and be in the program?**

You can but we don't recommend it. The regular hours of attending class and going to clinicals are about 32-34 hours a week and you still need study time on top of that.

**21. Can I take classes at night?**

Any of the prerequisites may be taken at any time at any campus but once admitted into the program, most courses are daytime. Students are scheduled for some afternoon clinical rotations during their fourth and fifth semesters.

**22. What if I don't pass the Criminal Background check?**

Clinical sites have the right to refuse any student for clinical placement. Policy at clinical sites may vary in whether or not students with particular positive findings on the background check will be allowed to attend clinical. In the event there are positive findings on any portion of the criminal background check, a primary clinical site will be notified and requested to make a decision on whether or not the student will be allowed to complete a rotation at the site, in light of the specific positive findings on the criminal background check. If the clinical site will not allow the student to participate in clinical at that site, the program chair will contact up to two additional clinical sites

offering the same type of clinical experience, if available, to attempt to place the student. If these attempts do not result in a clinical site placement for the student, the student will be notified that s/he may not enroll in clinical courses and any co-requisite courses. In most cases, this will mean that the student will not be able to progress in the program, and will therefore not be able to complete the courses required for graduation.

**23. If I have repeated a prerequisite, which grade to use?**

Multiple Attempt Policy (ASOM 3.2) – Repeating Courses – Students may repeat a course one time. In cases of extenuating circumstances, students may attempt a course for a third time only with the approval of the Campus Academic Officer (CAO) or designee. A withdrawal counts as an attempt.

The online application system for program cohorts beginning in Fall 2021, Spring, 2022, and Summer 2022 - as a transition initial roll-out - will “count” the highest of the first three grade attempts from the initial attempt regardless of the date in which the course was taken. As an example, if a student took the same course in 1999, 2003, 2005, and 2010, the system will pick up the highest grade from the 1999, 2003, and 2005 attempts.

**24. Do I need a computer and internet access?**

Yes, most of the Medical Imaging courses are hybrid meaning half of the class is on-line and the other half is face-to-face on campus. Many lectures, assignments, and videos are on-line so Medical Imaging students need a computer and high-speed internet. If a student does not have this at home, he/she can go to any Ivy Tech campus an access IvyLearn for course work.

**Certification/Licensure Training Disclaimer**

Ivy Tech Community College cannot guarantee that any student will pass a certification or licensing exam. Your success will be determined by several factors beyond the instruction you are given in the classroom including your test-taking skills, your willingness to study outside of class, and your satisfactory completion of appropriate practice exams. Certification and licensure exam questions are drawn from databases of hundreds of possible questions; therefore, a thorough understanding of the subject matter is required. The goal of Ivy Tech in providing a certification/licensure exam studies class is to assist you in understanding the material sufficiently to provide a firm foundation for your studies as you prepare for the exam.