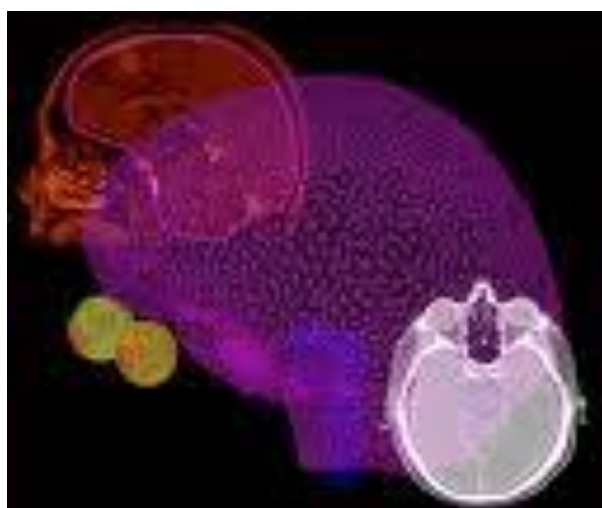




**Region 14  
Bloomington, IN**

# **RADIATION THERAPY PROGRAM**



## **Information and Application Packet 2012**

REVISED: August 23, 2011



Ivy Tech Community College of Indiana – Bloomington  
School of Health Sciences  
Radiation Therapy Program

Dear Interested Candidate:

Thank you for your interest in the Radiation Therapy Program. Enclosed you will find information about the program; the current curriculum sequence, the application form, and answers to frequently asked questions. Please note that we have made some changes to our entrance requirements for the 2012 selection process.

Radiation Therapy is an exciting field in healthcare; it is growing and changing every year. We want to help you with your goals to become a part of this healthcare team. Please carefully read through all the information supplied in this packet. This application packet is the most current and replaces any other previously printed application packet. If you have any questions, please contact enrollment services or a program faculty member.

Dr. Larry Swafford, PhD., R.T. (R) (T)  
Professor and Department Chair  
Ivy Tech Community College  
812-330-6223

Karlee Wyatt B.S. R. T. (R)(T)(CMD)  
Clinical Director  
Ivy Tech Community College  
812-330-6288



Ivy Tech Community College of Indiana – Bloomington  
School of Health Sciences  
Radiation Therapy Program

# Radiation Therapy

**DEGREE AVAILABLE:**

Associate of Science

**SALARY RANGE:**

The mean entry level salary for the profession is \$57,427 according to the 2010 salary survey by the American Society of Radiologic Technologists (ASRT)

**ACCREDITATION:**

Ivy Tech Community College is an accredited, equal opportunity, affirmative action institution of higher education.

This Radiation Therapy Program is accredited by the Joint Committee on Education in Radiologic Technology (JRCERT).

**ADDRESS:**

200 Daniels Way  
Bloomington, IN 47404

[www.ivytech.edu](http://www.ivytech.edu)

Radiation therapy utilizes ionizing radiation in a strictly controlled environment to treat disease, primarily cancer. High-energy x-ray, gamma, proton and electron beams are common forms of ionizing radiation used. Ionizing radiation can be administered using external beam therapy or by placing a radioactive material directly into a body tissue or cavity. The ultimate goal of radiation therapy is to destroy all abnormal cells while sparing the surrounding normal tissue.

Radiation therapists are part of a multi-disciplinary cancer management team. They are responsible for accurately positioning the patient for treatment, equipment operation, quality assurance, and calculating radiation dose to be delivered. Radiation therapists also have considerable responsibility for providing competent, concerned patient care. The therapist monitors patients throughout treatment, which often lasts several weeks

This program includes a curriculum that includes patient care, pathology and treatment principles, radiation physics, radiation biology and safety, and ethics (complete list is in this packet). Clinical practice and supplemental instruction are provided at the affiliated clinical sites. Upon successful completion of this program, graduates are eligible to take the American Registry Examination given by the American Registry of Radiologic Technologists (ARRT).

This Radiation Therapy Program is a selective program with limited enrollment due to accreditation standards set by the Joint Review Committee on Education in Radiologic Technology (JRCERT). Once accepted, it is a full-time, day program with students rotating to the various clinical sites. Classroom instruction occurs on campus and at the program's lab facility in downtown Bloomington.

For some health programs, you may not be eligible to be licensed or certified if you have been convicted of a felony. Please check with the Program Chair if you have questions concerning this before enrolling in the program or you may contact the American Registry of Radiologic Technologists (ARRT) <http://www.arrt.org>.



Ivy Tech Community College of Indiana – Bloomington  
School of Health Sciences  
Radiation Therapy Program

# **Radiation Therapy**

## ***MISSION AND GOALS***

### **PROGRAM MISSION STATEMENT**

The mission of the radiation therapy program is to provide the student with a cost effective, high quality education in radiation therapy technology. The program will prepare graduates for positions as entry-level radiation therapists who possess the knowledge and skills necessary to function as competent and ethical professionals. The program will promote critical thinking, cultural sensitivity and effective communication throughout its curriculum and stress the importance of community service, professional development and life-long learning.

### **PROGRAM GOALS**

1. Students will possess the knowledge and skills to demonstrate competency in all essential aspects of radiation therapy including treatment/simulation procedures, patient care and radiation safety.
2. The program will provide a curriculum that promotes ethical and professional decision making, effective communication skills and critical thinking.
3. Graduate students who are employable and meet the needs of the health care community.
4. Graduate students who value the importance of professional growth, life-long learning and community services.

Students are provided opportunities to develop skills in team building, critical thinking, cultural sensitivity, and effective communication. Clinical experience fosters affective growth in providing care and responding to the needs of a diverse patient population. The program continuously promotes professional growth and life-long learning.



Ivy Tech Community College of Indiana – Bloomington  
 School of Health Sciences  
 Radiation Therapy Program

**ESSENTIAL FUNCTIONS REQUIREMENTS FOR RADIATION THERAPY STUDENTS**

Qualified applicants are expected to meet all admission criteria and prerequisites, as well as, these essential abilities (technical standards) with or without reasonable accommodations. Students requesting accommodations to meet these criteria must inform the Program Chair in writing of the need for accommodations at the time of admission to the Radiation Therapy program and must provide appropriate documentation to Disability Services.

Task	Weight (lbs)/Reach	% of Time	Description Tasks	Remarks
Carrying/Lifting/ Pushing/Pulling/ Bending/Stooping/ Squatting	250 lbs	40%	Carry patient from wheelchair/stretchers to treatment table. Lifting patients from treatment table to wheelchair/stretchers and at <b>least 25 lbs above head (with no assistance)</b> . Pull or push wheelchair/stretchers to treatment room, devices from treatment machine. Lifting and moving equipment and patients. Perform CPR.	With assistance of 1 or 2 additional persons
Hearing/Speaking		100%	Listening and communicating with fellow students, faculty, therapist, patients, and members of health team. Identify/interpret non-verbal communication; prepare treatment charts.	Must have excellent communication skills
Vision/Touching		100%	Performing patient care (identify skin color and/or sclera, locate veins to start IV's, regulate and monitor equipment (monitors, oxygen tanks, suction units, etc.)), palpate body parts, reading treatment parameters patient charts, and driving skills	Corrected to 20/20 Vision Able to comprehend nonverbal communication
Sitting		40%	At simulation consoles, treatment planning computers, during chart reviews	Computer work
Eye/Hand Coordination		100%	Writing, setting up patients for treatment (lining up pt. marks with room lasers), patient care skills, driving	Sometimes in adverse light conditions
Standing/Walking		90%	Patient care in treatment room/simulator. From treatment room to console, waiting rooms to treatment rooms	Sometimes in adverse lighting
Thinking/Intellectual/ Conceptual/ Judgment		100%	Analytical and critical, process information, evaluate outcomes, synthesize knowledge and skills. Accurately calculate and administer radiation doses. Identify changes in patient condition.	
Emotional/Coping		100%	Avoid demonstrating personal stress or frustration when interacting with others; demonstrate professional standards of practice under stressful and ideal conditions. Comfort patient when coping with diagnosis.	



Ivy Tech Community College of Indiana – Bloomington  
 School of Health Sciences  
 Radiation Therapy Program

## Program Course Requirements

PREREQUISITE COURSES	CREDITS	RAD. THERAPY PROFESSIONAL COURSES SUMMER SEMESTER	CREDITS
APHY 101 – Anatomy & Physiology I	3	RDTH 225 Clinical Externship III	4
MATH 121 – Geometry-Trigonometry or MATH 131 – Algebra w/ Trig. or MATH 137 – Trig w/Analytic Geometry	3		
PHYS 101 Introduction to Physics	4	RAD. THERAPY PROFESSIONAL COURSES FALL SEMESTER 2	
HLHS 101 – Medical Terminology	3	RDTH 223 Radiobiology and Safety	2
		RDTH 232 Radiation Therapy Physics	3
GENERAL EDUCATION COURSES		RDTH 240 Pathology and Treatment Princ. II	2
APHY 102 – Anatomy & Physiology II	3	RDTH 235 Clinical Externship IV	5
COMM 101 – Speech or COMM102 – Interpersonal Communication	3		
ENGL 111 – English Composition	3	RAD. THERAPY PROFESSIONAL COURSES SPRING SEMESTER 2	
PSYC 101 – General Psychology	3	RDTH 241 Treatment Planning	3
Humanities Elective	3	RDTH 242 Quality Management in RTT	1
		RDTH 243 Rad. Therapy Capstone Course	2
RAD. THERAPY PROFESSIONAL COURSES FALL SEMESTER 1		RDTH 245 Clinical Externship V	3
RDTH 100 Introduction to Radiation Therapy	3		
RDTH 120 Cross Sectional & Imaging Principles	2		
RDTH 150 Patient Care in Rad. Oncology	3		
RDTH 145 Clinical Externship I	1		
IVYT 102 Information & Research Skills	1		
RAD. THERAPY PROFESSIONAL COURSES SPRING SEMESTER 1			
RDTH 220 Techniques and Applications	3		
RDTH 230 Pathology and Treatment Prin. I	2		
RDTH 155 Clinical Externship II	3		



Ivy Tech Community College of Indiana – Bloomington  
 School of Health Sciences  
 Radiation Therapy Program

# **Radiation Therapy Program**

## **APPLICATION AND SELECTION PROCESS**

If You Are Planning To Apply To the Radiation Therapy Program, *PLEASE* Read This Information Carefully

The Radiation Therapy Program has a limited enrollment based on the standards set by the Joint Review Committee on Education in Radiologic Technology (JRCERT). Applications to the program and/or completion of prerequisite courses do not guarantee admission into the technical portion of the program.

### **PRE- RADIATION THERAPY STEPS:**

Since the Radiation Therapy Program is a selective program, it is important that you closely follow the application steps and the requirements that follow:

1. The following steps are required for new Ivy Tech Community College students
  - Complete the application process for Ivy Tech Community College in the Admissions Office at any campus or on-line at [www.ivytech.edu/apply-now.html](http://www.ivytech.edu/apply-now.html).
  - Provide any official college transcript(s) to Ivy Tech-Bloomington.
  - Complete the COMPASS Assessment test, if applicable.
  - Make an appointment with your campus Enrollment Services Health Sciences Advisor in the campus advising center to help you with this process and to help you interpret your COMPASS scores.
  - If necessary, complete any of the Academic Skills courses required from the results of your COMPASS test.
2. Meet all of the physical requirements (see essential functions sheet in this packet)
3. Complete the prerequisites by the due dates (see below)
4. Complete admission and selection criteria
5. Completion of TEAS V. - (Test of Essential Academic Skills)

### **IMPORTANT DATES**

<b>Application Accepted Beginning</b>	<b>Application Deadline</b>	<b>Class Selected</b>	<b>Start of Radiation Therapy program</b>
March 1st, 2012	May 31st, 2012	June, 2012	August, 2012



Ivy Tech Community College of Indiana – Bloomington  
 School of Health Sciences  
 Radiation Therapy Program

**RADIATION THERAPY PROGRAM  
 2012 ADMISSION AND SELECTION CRITERIA**

*Selection of Radiation Therapy students will be based on the following criteria:*

- TEAS V Admission Examination (completed by application deadline)
- Completed Coursework and Cumulative GPA
- Document Job Shadowing Experience (required)
- Interview

**1. TEAS ADMISSION EXAM** (*refer to page 9 of this document for TEAS requirements*)

**2. COMPLETED COURSEWORK**

- a. Prerequisite courses must be **completed prior to the deadline** for the application.

APHY 101 Anat & Physiology I	3
PHYS 101 Intro. To Physics I	4
MATH 121, 131 or 137	3
HLHS 101 Medical Terminology	3

- b. Completed general education courses at time of application.
- c. Cumulative G.P.A.

**3. DOCUMENTED JOB SHADOWING EXPERIENCE**

- a. Minimum of 4 hours in a radiation therapy/oncology department
- b. Experience must be documented using the attached “Documentation of Job Shadowing Experience” form (pg. 13 in packet).

**4. ON-CAMPUS PANEL INTERVIEW**

- a. Not all applicants will receive an interview

*Applicant scores will be totaled and ranked. Based on rankings, the admissions committee will select Radiation Therapy program students.*

*\*Successful completion of coursework does not imply admission into the Radiation Therapy Program.*



Ivy Tech Community College of Indiana – Bloomington  
School of Health Sciences  
Radiation Therapy Program

### **TEAS V Requirement Effective September 2, 2010.**

- A. Students must score in the proficient, advanced, or exemplary ATI Academic Preparedness Category on the TEAS V to be considered for admission to the Radiation Therapy Program.
1. The student's **ATI Academic Preparedness Category** appears on the TEAS Score report immediately below the **Adjusted Individual Total Score**.
  2. The **Adjusted Individual Total Score** will be included in the selection point system.
  3. Students whose ATI Academic Preparedness Category is at the developmental or basic level will not be considered for admission.
- B. Beginning September 2, 2010, students applying for radiation therapy admission for Fall 2011 and beyond must take the TEAS V. Scores from previous versions will not be accepted for selection.
- C. TEAS V.
1. Information on the TEAS V is available at [www.atitesting.com](http://www.atitesting.com)
  2. Study guides are available via campus bookstores and also at [www.atitesting.com](http://www.atitesting.com)
  3. The TEAS V may be taken up to 2 (two) times in a two-year period regardless of the testing location.
    - Please note that applicants who have completed previous versions of the TEAS will be required to take TEAS V for the purpose of applying to the radiation therapy program for admission.
    - Previous versions of TEAS will no longer be available for radiation therapy applicants after September 2, 2010.
    - Previous versions of the TEAS will not be included in the two attempts rule. Applicants will be able to take the TEAS V test version up to 2 times in a two-year period, regardless of the number of times the applicant has taken previous versions of the TEAS.
  4. There must be at least 30 (thirty) days between the test dates for the TEAS V (as with number of attempts, this excludes previous versions).
  5. The student must pay the approved testing fee each time.
  6. Exam scores will be valid for 2 (two) years from the date of the initial TEAS test.
  7. The TEAS test must include all four test components to be considered valid: Reading, English, Math, & Science. Partial tests will not be accepted.
  8. Applicants who take the TEAS at schools other than Ivy Tech must contact Assessment Technologies Institute to have an official copy submitted directly to the radiation therapy program chair.
  9. Applicants must score at the Proficient Level or higher to be considered for admission.
  10. TEAS scores will be used in the selection point system
  11. Applicants are to submit only **one** TEAS score report in the application packet to be considered for determination of minimum eligibility and inclusion of points in the decision score. If the student includes more than one TEAS score report is included in the application packet, only the latest attempt will be considered for determination of minimum eligibility and inclusion of points in the decision score.



Ivy Tech Community College of Indiana – Bloomington  
School of Health Sciences  
Radiation Therapy Program

### **Radiation Therapy Clinical Rotation Sites**

Students will be required to rotate to various hospitals and clinics for the clinical portion of their education. The currently approved clinical sites include the following:

Bloomington Hospital Radiation Oncology Center- Bloomington  
Midwest Proton Radiotherapy Institute- Bloomington  
White River Medical Park- Bedford  
Morgan Regional Medical Center- Martinsville  
Schneck Medical Center- Seymour  
Good Samaritan Hospital- Vincennes  
Major Hospital/Benesse Cancer Center- Shelbyville



Ivy Tech Community College of Indiana – Bloomington  
 School of Health Sciences  
 Radiation Therapy Program

**2012 RADIATION THERAPY PROGRAM ADMISSION APPLICATION**  
**(Please complete and submit this form by published deadline)**

Last name: \_\_\_\_\_ First Name \_\_\_\_\_ Middle Initial \_\_\_\_\_

Maiden name \_\_\_\_\_ (if applicable) Ivy Tech ID or C# \_\_\_\_\_

Street Address \_\_\_\_\_ Apt. # \_\_\_\_\_

City \_\_\_\_\_ State \_\_\_\_\_ ZIP \_\_\_\_\_

Phone ( ) \_\_\_\_\_ ( ) \_\_\_\_\_

Email address \_\_\_\_\_

**PREREQUISITES**

PREREQUISITE COURSES	SEMESTER COMPLETED	COLLEGE/UNIVERSITY	Grade	Transcript on File: Yes/No
APHY 101: ANATOMY & PHYSIOLOGY I				
MATH 121,131 or 137				
HLHS 101: MEDICAL TERMINOLOGY				
PHYS 101: PHYSICS				

**GENERAL EDUCATION**

APHY 102: ANATOMY & PHYSIOLOGY II				
ENGL 111: ENGLISH COMPOSITION				
PSYC 101: INTRO. TO PSYCHOLOGY				
HUMANITIES ELECTIVE				
COMM 101: FUND. OF PUBLIC SPEAKING <b>OR</b> COMM 102: INTRO. TO INTER. COMM.				
*IVYT 102: Information Studies & Research Skills		*Must be taken in first semester of professional program		

\*\*Computer literacy is required for program entrance. Proof of literacy may include completing CIS 101, an appropriate equivalency exam or demonstrated life experience. The applicant is proficient in the use of presentation and document software (ex. Word or PowerPoint) Please circle one: YES / NO



Ivy Tech Community College of Indiana – Bloomington  
 School of Health Sciences  
 Radiation Therapy Program

**POINT DISTRIBUTION**  
*(For your records only, do not submit)*

**SECTION 1**

*Completion of TEAS V. Entrance Exam (points awarded by Adjusted Individual Total Score)*

<i>Section 1 Points Earned</i> _____
--------------------------------------

**SECTION 2**

*A. Completed Prerequisite Coursework*

<u>GRADE</u>	<u>POINTS</u>
A	9 Points x # credit hours
B	6 Points x # credit hours
C	3 Points x # credit hours

APHY 101 Anatomy and Physiology I (max. 3 credits awarded)	<input type="checkbox"/> _____
MATH 121, 131 or 137 (max. 3 credits awarded)	<input type="checkbox"/> _____
HLHS 101 Medical Terminology (max. 3 credits awarded)	<input type="checkbox"/> _____
PHYS 101 Physics (max. of 4 credits awarded)	<input type="checkbox"/> _____

<i>Section 2A Points Earned</i> _____
---------------------------------------

*B. Completed General Education Coursework*

<u>GRADE</u>	<u>POINTS</u>
A	9 Points
B	6 Points
C	3 Points

APHY 102 Anatomy & Physiology II (max of 3 credits awarded)	<input type="checkbox"/> _____
ENGL 111 English Composition (max. 3 credits awarded)	<input type="checkbox"/> _____
PSYC 101 Introduction to Psychology (max. 3 credits awarded)	<input type="checkbox"/> _____
COMM 101 or 102 (max. 3 credit awarded)	<input type="checkbox"/> _____

<i>Section 2B Points Earned</i> _____
---------------------------------------

*C. Cumulative Ivy Tech Grade Point Average*

< 2.75 (0pts)      2.75-3.25 (3pts)      3.26-3.75 (6pts)      3.76-4.0 (9pts.)      \_\_\_\_\_

<i>Section 2 total points earned</i> _____
--

**SECTION 3**

*Documented Job Shadowing Experience (Required)*

<i>Section 3 Official Forms Completed</i> YES / NO      Date _____
--

**SECTION 4**

*On-Campus Panel Interview (Required)*

<i>Section 4 Interview Score</i> _____
--

**Total Points =**



Ivy Tech Community College of Indiana – Bloomington  
School of Health Sciences  
Radiation Therapy Program

## Program in Radiation Therapy Documentation of Job Shadowing Experience

As part of the admission and selection process to the Ivy Tech Bloomington Radiation Therapy Program, students must complete 4 hours of job shadowing experience. By submitting and signing this form, you are verifying the experience identified below has been performed and completed.

**This applicant has completed at least 4 hours of radiation therapy job shadowing experience.**

\_\_\_\_\_  
**Applicant's Name**

\_\_\_\_\_  
**Date**

\_\_\_\_\_  
**Signature of Supervisor**

\_\_\_\_\_  
**Title**

\_\_\_\_\_  
**Facility Name**

\_\_\_\_\_  
**Date of Experience**

***\*this form must be used to document job shadowing experience.***



Ivy Tech Community College of Indiana – Bloomington  
School of Health Sciences  
Radiation Therapy Program

## **CHECKLIST FOR RADIATION THERAPY PROGRAM**

### College Admission Requirements:

1. Application to Ivy Tech Community College – Bloomington Campus
2. Official College Transcript(s)
3. COMPASS taken or SAT / ACT Scores evaluated
4. If you are attending another Ivy Tech, please request your student file to be sent to Bloomington or submit items 1-3 to the Bloomington campus Registrar's Office.

### Program Admission Requirements:

- Step 1 \_\_\_\_\_ Complete the four (4) general education courses by the end of the Spring 2012 semester.
- Step 2 \_\_\_\_\_ Complete the Test of Essential Academic Skills (TEAS) by the application deadline (May 31<sup>st</sup>).
- Step 3 \_\_\_\_\_ All college transcripts should be on file with the Ivy Tech Bloomington Registrar's Office by the application deadline. Ivy Tech transcripts are found through your Campus Connect account. (You may request assistance from the Records and Registration Office to help you locate transcripts on Campus Connect)
- Step 4 \_\_\_\_\_ Job Shadowing Documentation Form
- Step 5 \_\_\_\_\_ **Submit application documents by deadline (May 31, 2012).**

Please return the following pages:

- Program Admission Application (see page 11 of this packet)
- Copy of TEAS V. test results (a copy is given to the student upon completion of the test)
- Copy(s) of college transcripts (unofficial Ivy Tech transcripts are acceptable)
- Job shadowing Documentation Form (pg. 13 of this packet)
- Checklist for Radiation Therapy Program (this page)
- **All items must placed together in an envelope or portfolio**

### **Incomplete applications will be declined.**

**It is your responsibility to turn in the completed required paperwork; we will *not* contact you if your application is incomplete.**

Applications may be hand delivered or mailed using USPS, UPS, FedEx, etc:

Ivy Tech Community College – Bloomington  
Radiation Therapy Program Application  
200 Daniels Way, Bloomington, IN 47404  
Office Number C218 (for drop-off only)



Ivy Tech Community College of Indiana – Bloomington  
School of Health Sciences  
Radiation Therapy Program

## **Radiation Therapy Program** **Frequently Asked Questions (FAQ)**

**1. How many students do you accept every year?**

Presently it is 8 per year.

**2. How many applications do you receive?**

It varies from year to year but average is around 20 - 30.

**3. Is there a waiting list?**

No, we do not use a waiting list. If an applicant is not selected, then he or she must reapply the following year.

**4. What is your deadline for the application?**

The deadline is the last business day of May.

**5. When are students selected? How will I know if I am accepted?**

The selection process will be early summer semester. Students will receive a letter from the Program regarding acceptance, non-acceptance, or alternate status.

**7. Where do I take the TEAS?**

See information about TEAS in the selection process of this packet. TEAS can be taken at the Workforce and Assessment/Testing Centers at most Ivy Tech campuses.

**8. What do I need to score on the TEAS?**

See page 9 of this document for TEAS requirements

**9. How can I study for the TEAS?**

There is a Pre-Test manual for the TEAS test available in the Ivy Tech bookstore. For sample questions and testing tips go to [www.atitesting.com](http://www.atitesting.com).

**10. How are students selected?**

The selection process is decided by a point system. See point distribution document in this packet.

**11. What do I need to do if I am accepted?**

If you are accepted into the Radiation Therapy Program, you will need to do the following:

- Attend the mandatory summer orientation session.
- Submit current immunizations by a medical doctor.
- Have a TB skin test.
- Have a current Healthcare Provider CPR card.
- Hepatitis B surface antibody shot is recommended but is optional. Details will be sent prior to starting the program.
- Submit to a criminal background check and drug screen.
- Required to travel to the various clinical sites.



Ivy Tech Community College of Indiana – Bloomington  
School of Health Sciences  
Radiation Therapy Program

**12. What happens if I am not accepted?**

If the student is not accepted the student may...

- Reapply the following year.
  - Students must submit a new application portfolio
- Consult with your advisor for other programs that you may complete or be eligible to pursue.
- Discuss with faculty areas that need to be improved.
- Discuss with faculty an alternate plan.

**13. What is the cost of the program?**

The program is 70 credits so multiply 70 x the present tuition for ITCC (you can go to <http://ivytech.edu/why-ivy-tech/half-the-cost.html> for current tuition).

Other cost includes:

- Program Scrubs. Purchased in bookstore for approximately \$35 per pair.
- There is also a cost for books. This too will vary according to market value but I would estimate to be around \$1,200
- Students will also travel to a variety of clinical sites so gasoline is another cost.
- Radiation Monitoring badge
- Clinical computer record access

**15. Can I work and be in the program?**

You can but we do not recommend it. The regular hours of attending class and going to clinical are about 32-34 hours a week and you still need study time on top of that.

**16. What do I do if I've already completed a college degree?**

Have your official college transcripts sent to Bloomington Ivy Tech to be evaluated. The evaluation will determine what classes will transfer and what additional courses need to be completed.

**17. Do I have to drive to Bloomington for RDTH classes?**

Yes, the program is Bloomington based and students are required to attend classes at this campus. The program also has a lab facility located in downtown Bloomington.

**18. What if my criminal background check or drug screen comes back positive?**

The student may or may not be able to complete the program's clinical portion. The clinical portion is a requirement for graduation. We strongly encourage you to inform us of any possible issues that may show up on your background check.

**19. Where can I complete the job shadowing requirement?**

Any radiation therapy/oncology department that allows you to complete this requirement is acceptable.